

ULTRACUT 40E

Portable Inverter Air Plasma Cutter

Inverter High Frequency 220V (50/60Hz) with variable output control. Maximum 40A output at 60% duty cycle.

AMH[®]

Cuts stainless steel, copper, iron and aluminium up to 1/2 inch (13mm) thick.
Severe cut 5/8 inch thick (16mm)

Metal plates with different thickness can be curve-cut into any shape.

“Easy touch” smooth start.

Air regulator with water separator for longer tip life included.

Fan assisted air-cooling with temperature overload protection.

Comes with “Back Up Pack” of tips and nozzles.

Compact cabinet
15x 6x 12in. (371x 155x 295mm).

Lightweight
(only 18lbs, 8kg).

Fully compliant with:
EMC directive 73/23/EEC and 89/336/EEC.
European Standard: EN/IEC60974-1



No. Reference UltraCut 40E: 28.PCA40E

State of the art technology at your finger tips

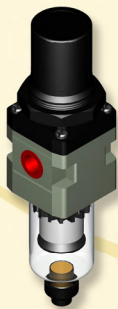
ULTRACUT 40E

Plasma Cutting Process

Plasma cutting is a process that is used to cut steel and other metals of different thicknesses (or sometimes other materials) using a plasma torch. In this process, compressed air is blown at high speed out of a nozzle; at the same time an electrical arc is formed through that gas from the nozzle to the surface being cut, turning some of that gas to plasma. The plasma is sufficiently hot to melt the metal being cut and moves sufficiently fast to blow molten metal away from the cut.

The HF Contact type uses a high-frequency, high-voltage spark to ionise the air through the torch head and initiate an arc. These require the torch to be in contact with the job material when starting.

Plasma is an effective means of cutting thin and thick materials alike. Since plasma cutters produce a very hot and very localized "cone" to cut with, they are extremely useful for cutting sheet metal in curved or angled shapes.



The Ultracut 40E include an air filter regulator who not only provides a clean and dry air, but also ensure the steady pressure of the air source.

Specifications:

Rating flow: 550 L/min
 Applicable pressure range: 0 ~ 1,0 Mpa
 Applicable temperature: 0 ~ 60°C

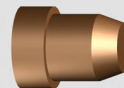
Technical information

Input voltage.....	220V AC ± 10%
Input frequency.....	50Hz /60Hz
Input capacitance.....	6 KVA
No-load voltage.....	230V
Current range.....	20-40A
Output voltage.....	96V
Rated duty cycle.....	60%
Efficiency.....	85
Power factor.....	0.93
Insulation class.....	B
Protection class.....	IP23
Arc starting.....	Contact arc starting (pilot arc)
Air flow.....	0.17 m ³ /min
Max. cutting thickness.....	13mm
Weight.....	8kg (18lbs)
Size (Lx Wx H).....	371x 155x 295mm (15x 6x 12in)

Accessories



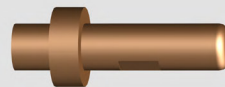
Spare ceramic cup (diffuser)
 (Reference: 19.707.00.02E)



Spare cooper tip
 (Reference: 05.707.00.04E)



Spare ceramic ring
 (Reference: 19.707.00.04E)



Spare electrode
 (Reference: 04.707.00.04E)



Cutting gun cable assembly, ground clamp cable assembly, filter regulator & reinforced hose included.

AMH Canada Ltd 391, rue Saint-Jean-Baptiste Est, Rimouski (Québec) Canada G5L 1Z2

EUROPE Tel: +33 6 16 99 54 08 USA Tel: (910) 371-9313 Fax: (910) 371-9417

CANADA or other countries Tel: (418) 724-4105 Fax: (418) 722-6108

Website: www.amh.ca Email: sales.amh@amh.ca